

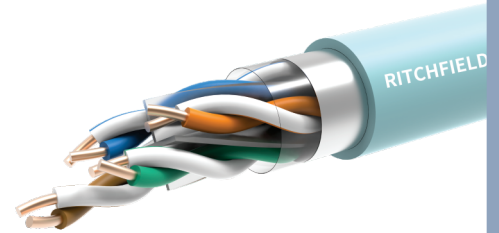
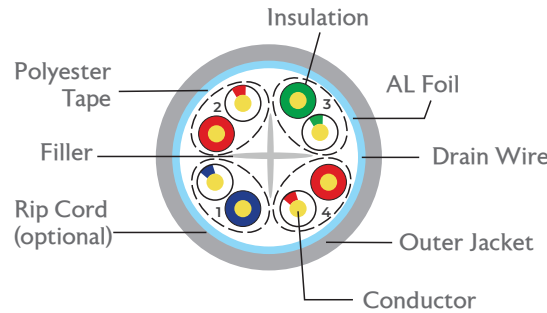
Cat 6 4-Pair F/UTP Cable

Standards

UL Subject 444, ANSI/TIA 568C.2, ANSI/TIA 568C.2-D, ISO / IEC 11801, IEC 61156 - 5, YD/T1019-2013

Applications

- 100 BASE - TC
- 100 BASE - TX
- 100VG - Any LAN
- 1000 BASE - T
- 1000 BASE - TX
- 155 Mbps ATM
- 622 Mbps ATM



Cross Section Diagram

Mechanical Information

Operating Temperature	-20 ~ 75°C
Maximum Pulling Force	110N
Minimum Bending Radius	8 X O.D.
Flame Test	PVC: CMX/CM/CMG/CMR LSZH: CPR-Dca/Eca/Fca

Product Structure

Conductor	23AWG
Number of Pairs	4
Nominal Conductor Dimension	0.57 ± 0.02mm
Insulation Material	Solid PE
Nominal Insulation Dimension	1.14 ± 0.05mm
Color Code	White&Blue/Blue White&Orange/Orange White&Green/Green White&Brown/Brown
Seperator	Yes
Individual Shield & Material	Polyster Tape
Outer Shield & Material	AL Foil
Drain Wire	Yes
Outer Jacket Material	PVC/LSZH
Ripcord	Optional
Nominal Cable Diameter	7.30 ± 0.30mm

Electrical Characteristics

Frequency (Mhz)	Attenuation (dB/100m)	NEXT (dB)	PSNEXT (dB)	Prop. Delay (ns/100m)	ACR-F (dB/100m)	PSACR-F (dB/100m)	Return Loss (dB)
1	2.0	74.3	72.3	570	67.8	64.8	20.0
4	3.8	65.3	63.3	552	55.8	52.8	23.0
8	5.3	60.8	58.8	546.7	49.7	46.7	24.5
10	6.0	59.3	57.3	545.4	47.8	44.8	25.0
16	7.6	56.2	54.2	543	43.7	40.7	25.0
20	8.5	54.8	52.8	542	41.8	38.8	25.0
25	9.5	53.3	51.3	541.2	39.8	36.8	24.3
31.25	10.7	51.9	49.9	540.4	37.9	34.9	23.6
62.5	15.4	47.4	45.4	538.6	31.9	28.9	21.5
100	19.8	44.3	42.3	537.6	27.8	24.8	20.1
200	29.0	39.8	37.8	536.5	21.8	18.8	18.0
250	32.8	38.3	36.3	536.3	19.8	16.8	17.3

Ordering Information

Part Number	Product Description
RF1-6FUPV-3 <CC>	Cat 6 F/UTP Twisted 4 pairs solid cable, PVC Sheath, 305 Mtr/ Box, <Color>
RF1-6FULZ-3 <CC>	Cat 6 F/UTP Twisted 4 pairs solid cable, LSZH Sheath, 305 Mtr/ Box, <Color>

CC = Color LG - Lemon Green, SB - Sky Blue, OR - Orange, GT- Grey, YL - Yellow, BL - Blue, GR - Green, WH - White, BK - Black, PR - Purple